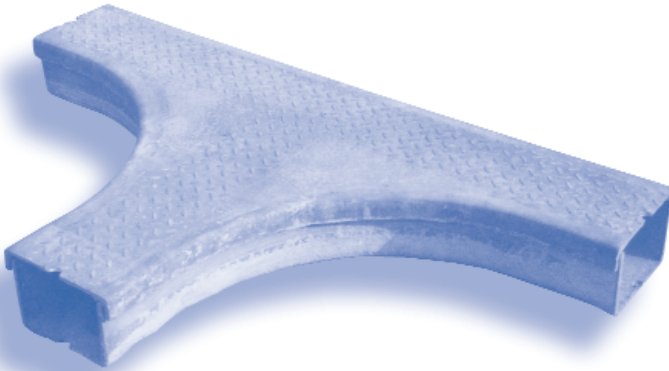


ACCESSORIES

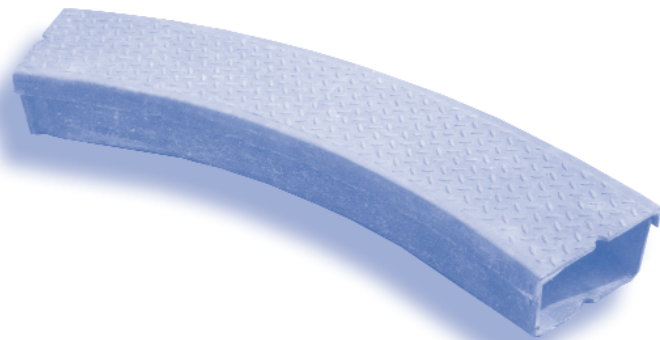
'T' Piece

Simple, effective and easily installed BCM's GRC 'T' piece comes complete with a one piece lid and it is ideal for forming junctions in both elevated and ground channel. 'T' pieces are 1500mm long, 750mm wide with a radius of 500mm. Product codes and Rail Industry catalogue numbers for ground channel 'T' pieces are available on request.



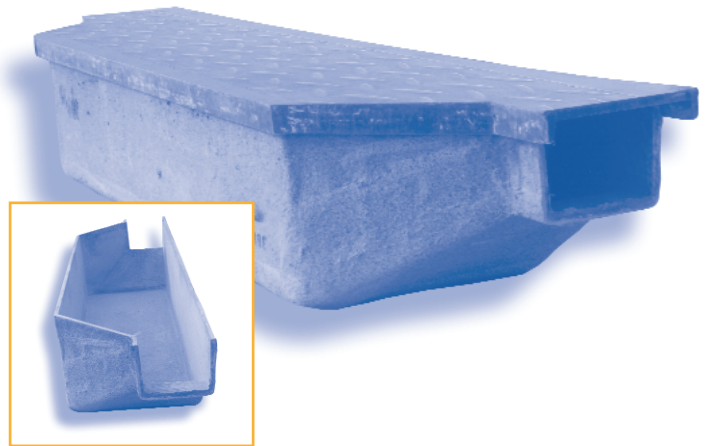
Channel Bend

Two 45 degree bends combine to product 90 degree channel angle. Each 45 degree bend is 1.5 meters in length and is available to match all sizes of ground and elevated channels. Supplied complete with lids. Interlocking 'H' pieces are available if required.



Joint Box

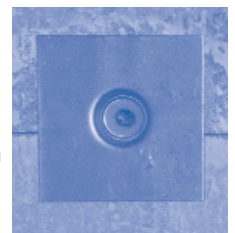
BCM's GRC joint boxes have been designed to enable a joint to be made in either elevated or ground channel without interference to the cable. The joint box comes complete with a one piece lid. Code numbers for ground channel joint boxes are available on request.



LOCKING & SECURITY

'H' pieces

Specially designed for its ease of fitting the interlocking 'H' piece when fixed to the channel base ensures perfect alignment of installation. When fitted to the lids the 'H' piece makes the whole system tamper proof.



Locking brackets

BCM's unique locking bracket can be fitted to all lid sizes to ensure that the system is vandal resistant. The device can be easily sprung into place after installation of cables without reducing channel capacity. It can quickly be locked and unlocked using the security bolt provided.

