

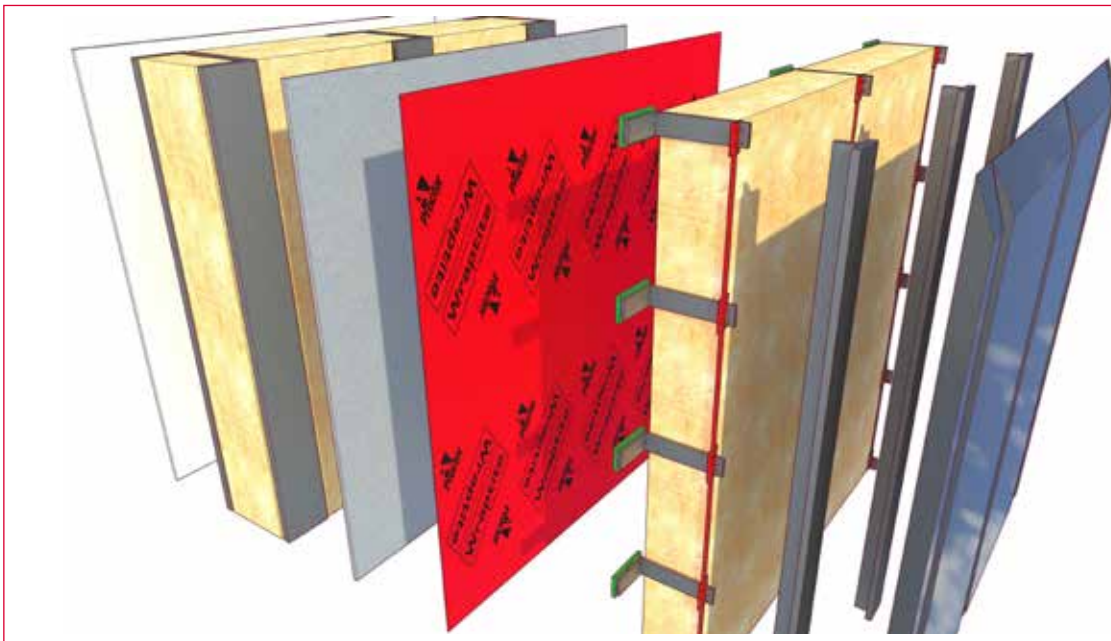
# Wraptite®

## DESCRIPTION

The self-adhered nature of Wraptite allows for a simple and efficient installation process, minimising the use of additional sealants and tapes, and requiring no specialist contractors to achieve the required results. This one-step solution provides both a strong air barrier layer and effective secondary weather protection in one installation process, achieving a wind and watertight envelope more quickly than using traditional methods.

### Key Benefits

- Self adhered
- Airtight yet vapour permeable
- BBA Certificate No. 15/5274
- Passive House Institute - Certified component
- Tough 3-Layer Laminate resists punctures and tears
- Simple to install
- Wide service temperature range
- Can be left exposed for up to 90 days (North America) or 120 days (UK) during construction\*
- Free from Volatile Organic Compounds



### Applications

- SIPs panels
- Steel and timber framed constructions
- Façade systems
- Cassette Floor construction
- Unventilated warm roofs
- Exterior Gypsum Sheathing
- Aluminium (painted or mill finish)
- OSB
- Rigid insulation
- Cast-in-place concrete
- Rigid vinyl
- Pre-painted steel
- Galvanized metal
- Precast concrete
- Steel
- Concrete block
- Plywood



\*Please contact the A. Proctor Group's technical department for advice on specific geographical locations.

## PHYSICAL PROPERTIES

## Wraptite

PROPERTY	TEST/STANDARD	RESULT
	<b>BS EN 13859-1/2:2010</b>	
Roll Length	-	50m
Full Roll Width Tape Widths	-	1.5m 75mm, 100mm, 150mm, 300mm (other sizes available on request)
Roll weight		24kg
Nominal Thickness	Calibrated Deadweight Micrometer	0.65mm
Basis Weight	Electronic Weigh Scale	292 g/m <sup>2</sup>
Installation Temperature	-	-10°C to +60°C
Service Temperature	-	-40°C to +100°C
Water Penetration	EN 1928 : 2000 Method A	Class W1 (before ageing) Class W1 (after ageing)
Resistance to Penetration of Air	EN 12114	0.01 m <sup>3</sup> /m <sup>2</sup> .h.50 Pa
Water Vapour Permeability	EN ISO 12572 (C)	Sd 0.039m
Water Vapour Transmission	BS 3177:1959	893 g/m <sup>2</sup> .24hr
Peel Adhesion	EN 1939	5.01 N/10mm
Tensile Strength	EN 12311-1	Mean MD 417N      Mean XD 252N
Tear Resistance	EN 12310-1	Mean MD 412N      Mean XD 286N
Dimensional Stability	EN 1107-2	MD +0.3%      XD +0.1%
Reaction to Fire	EN 11925-2 BS EN 13501-1	Class B-s1,d0 <sup>1,2</sup>
Flexibility at Low Temperature	EN 1109	No cracks at -40°C

<sup>1</sup>tested over 12mm calcium silicate board / fibre cement board as per BS EN 13238:2010.

<sup>2</sup>free hanging. It is unlikely that any breathable membrane in this application, including Wraptite would be free hanging due to either the self-adhered backing in Wraptite or the tapes used in installing non-self-adhered membranes. This test result is included to allow product specifiers to objectively compare Wraptite to other membranes tested using this method, and does not constitute a recommendation that Wraptite is installed free-hanging. Clients are urged to discuss their individual project with the Technical Department to ensure the suitability for any given project taking into account substrate, building height and boundary proximity.

All tests carried out to EN 13859-2:2010 standard.



Visit our website...

[www.proctorgroup.com](http://www.proctorgroup.com)

[contact@proctorgroup.com](mailto:contact@proctorgroup.com) | +44 (0) 1250 872261

Revised: August 2025

Version: 1.002

Next review due: August 2026

CE

